

SWPBS

School Wide Positive Behavior Support

AM: SWPBS implementation

PM: School visits

Erasmus+

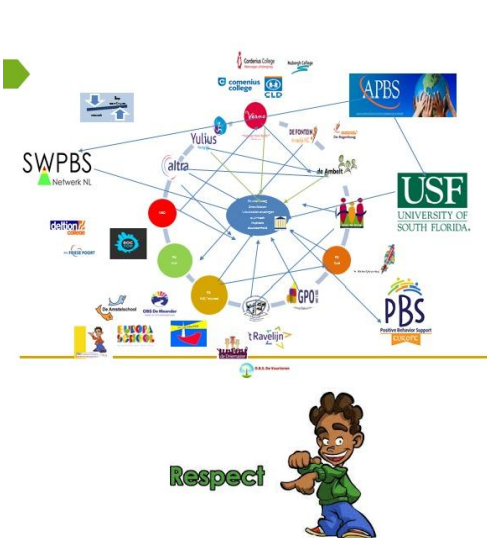
Decide Right

April 5th 2022

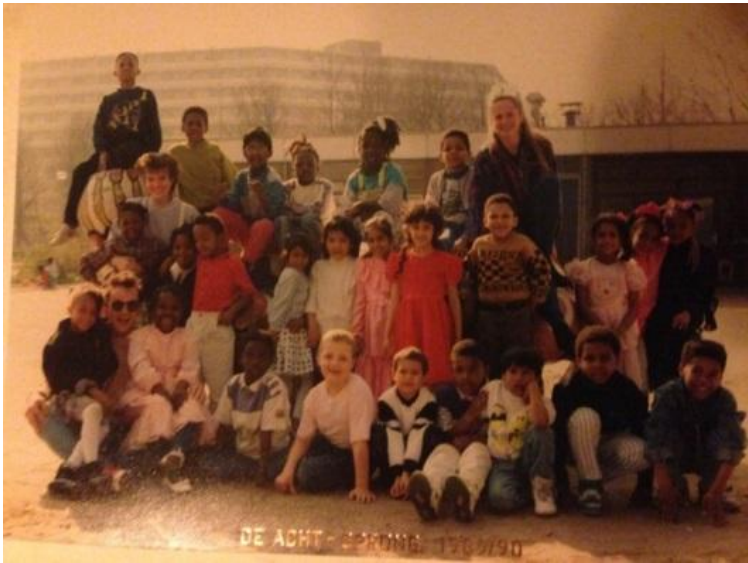
Joke Kamstra



Joke Kamstra



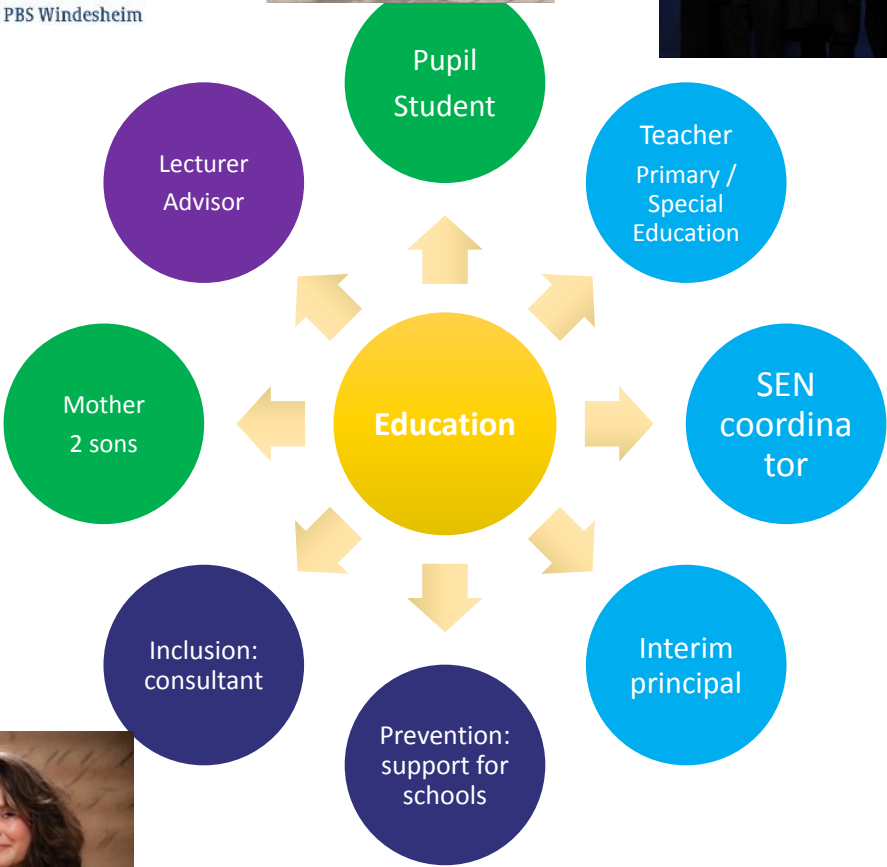
BAO Achtsprong



SBO Meander



K4 in onderwijs!



WSNS



SWPBS



What is your experience in schools?

- Your best memory or...
- May be a horrible one?



SWPBS



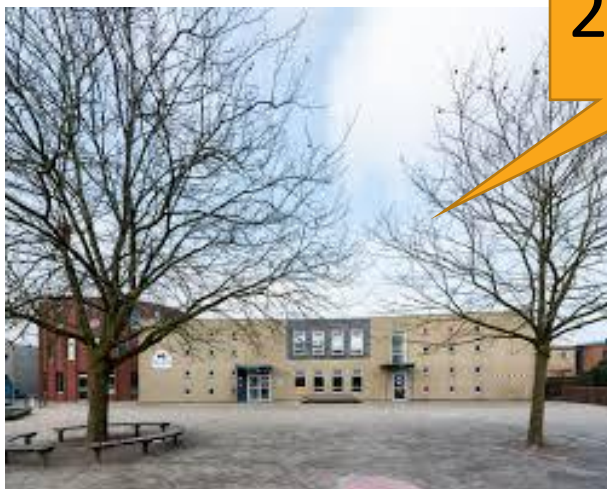
So... how do you want 'your' school to be??

Connect to **the values** of this group

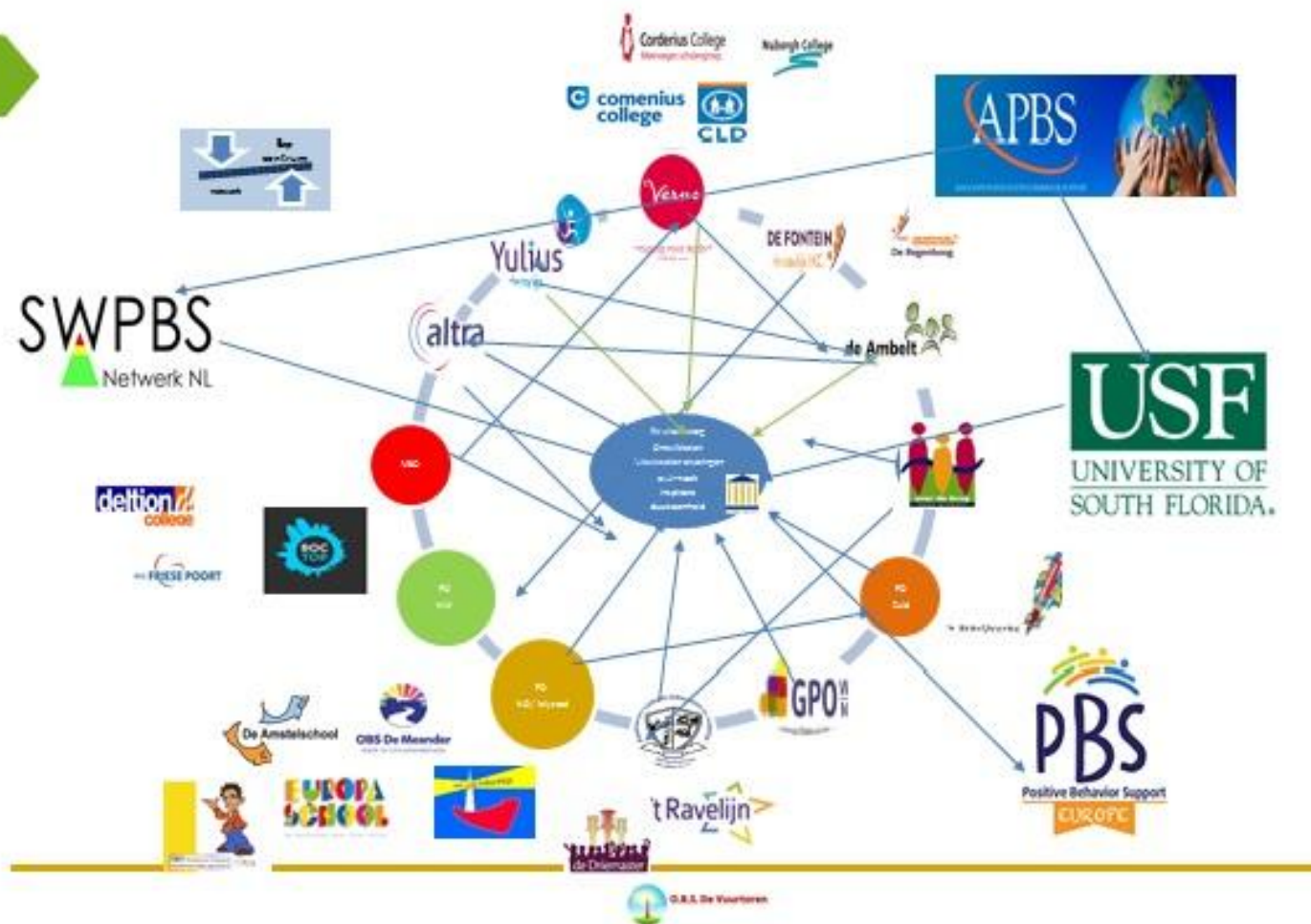


SWPBS

Result:



2012



Result: example of a school – research by inspection of education

OKE naam	Ind 1 eind uitstroom	Ind 2 IQ – einduitstroom bestemming	Ind 3 bestendinging	Ind 4 Tussentijdse uitstroom	Primaire detectie	OPP op niveau 14-15
SO Herfte	Geen risico	Geen risico	Geen risico	Geen risico	Geen risico	Geen risico

‘NO RISK’



Yes

- SWPBS is evidence based
- SWPBS is helpfull in creating a positive school climate for all
- SWPBS supports well being and learning

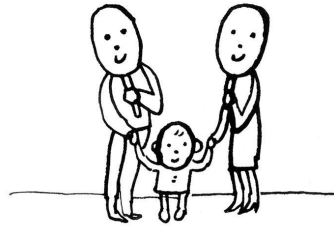
But... how to bring 'big ideas' into practise?

Start with **WHY**



Coaching of School Wide PBS

School wide.... **Most important** 'factor'



Teachers!
Teacher assistants!
Supervisors!

And yes also: principal!



Coaching of School Wide PBS

Knowledge!

- Behavioral Science..
- Theory:
- Implementation Science !!



Research says: **positive** contacts **prevent** problem behavior



Source:

<http://pb4l.tki.org.nz>

Partnership for Support Europe – PBS
EUROPE- 50996-LLP-1-2010-NL-COMENIUS-CMP



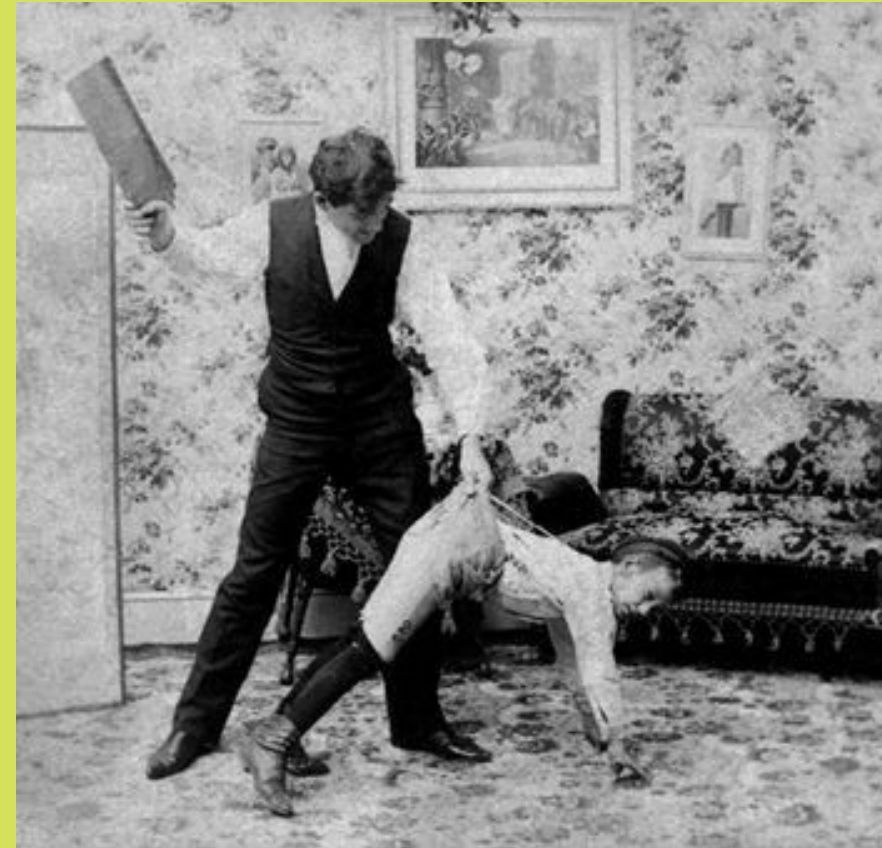
Teachers want to be....



RESEARCH SAYS: Punishment doesn't work!

Challenge #2:

Why is punishment so deeply rooted in our society?



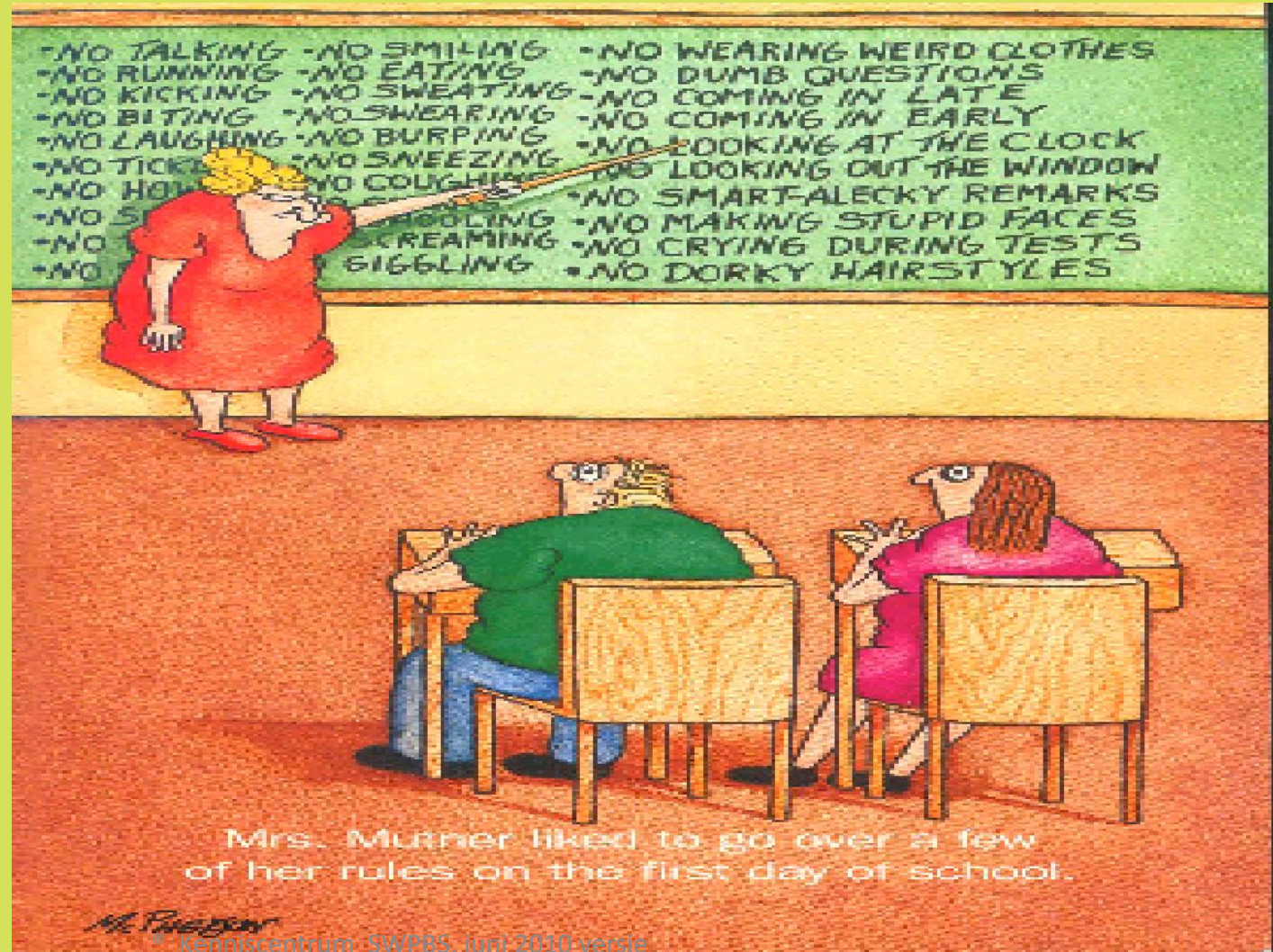
Research says: the brain learns more from positive feedback

Children learn more if attention is drawn to expected behavior (Crone, 2008)

Children until 12 years old are not capable to translate 'Do-not-do-messages to messages (Crone, 2008)



We all know....students will NOT learn in this way..



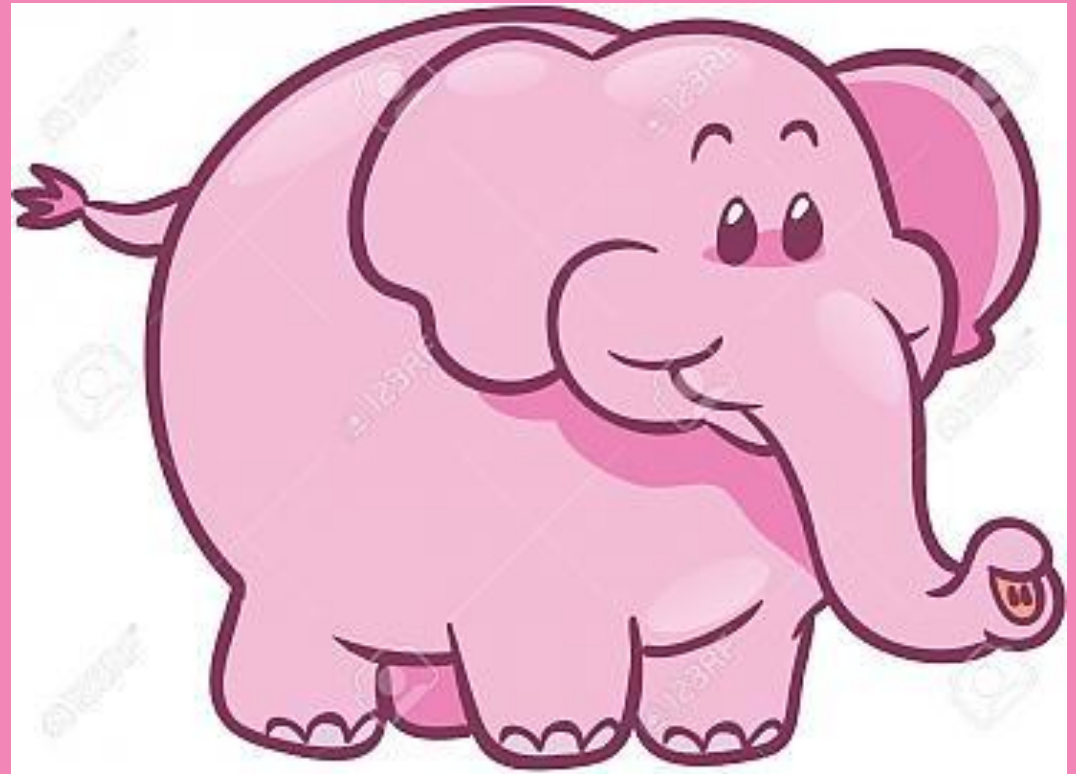
Exercise!



What do you see right now:

So why do we still tell others
'NOT'/ NO!!!

????



NO!!!



I see you....





Where is the solution?

More repression, back to the old days?



Creating a positive, predictable and safe school climate?



How? Starting point

**Schools will not change
because you **tell** them...**

We cannot 'make' students learn or behave

We cannot 'make' teachers positive,
pro-active...

- We can only create **environments** that increase the likelihood that students will learn and behave.

(Lewis, 2010)



SWPBS = content & process - like building a house



Aim: succes for all students

Adressing
behavior and
learning
challenges
schoolwide and
based on
shared values

Emphasis on
prevention via a
multi tiered
system of
support

Positive
approach:
teaching and
ackowldging

Data driven
decision
making

Partnership
with parents
and
cooperating
with
stakeholders

Schoolwide approach based on shared values
Mission statement, legislation

Vrij naar een model van J Kamstra



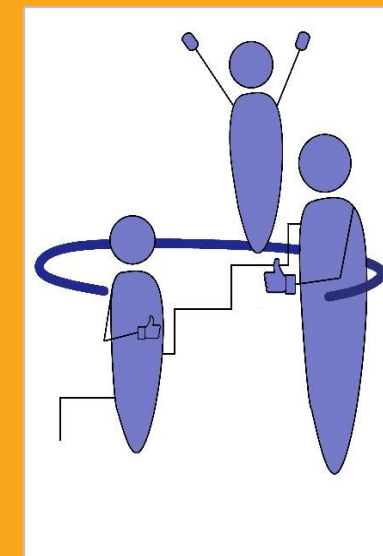
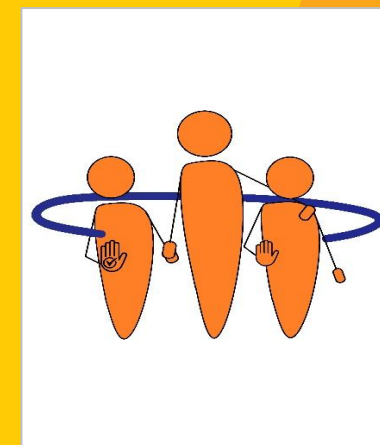
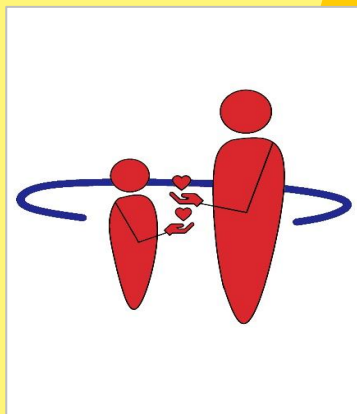
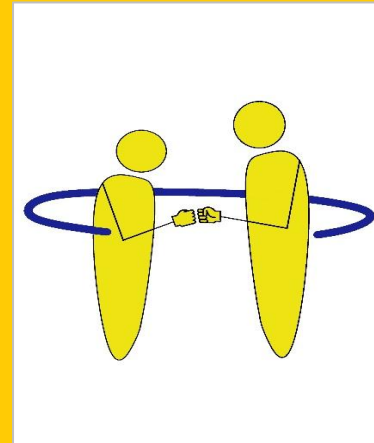
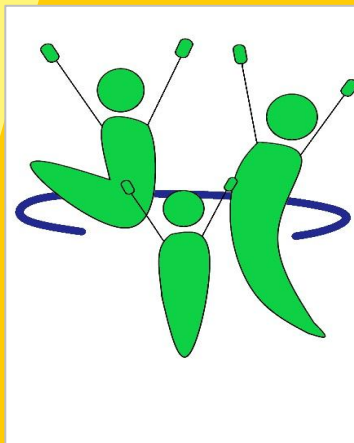
**IF YOU CAN IMAGINE IT,
YOU CAN ACHIEVE IT.
IF YOU CAN DREAM IT, YOU CAN BECOME IT.**

WILLIAM ARTHUR WARD.

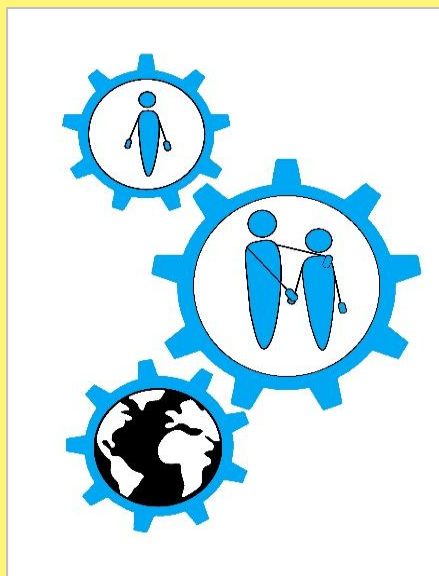


RESPECT – SAFE – RESPONSIBLE :





**Which
values?!**

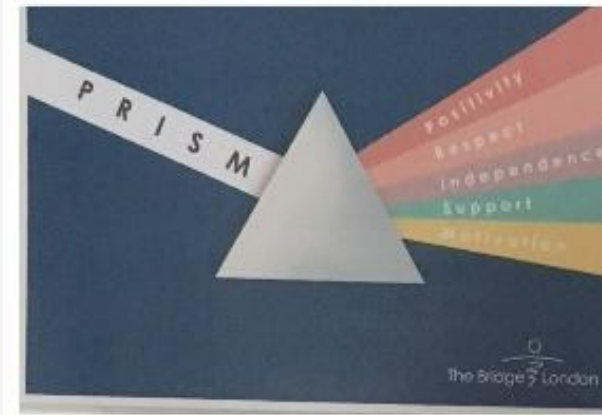


Values I see you.....! Catch them making positive choices!



Values & expectations

The Bridge Secondary



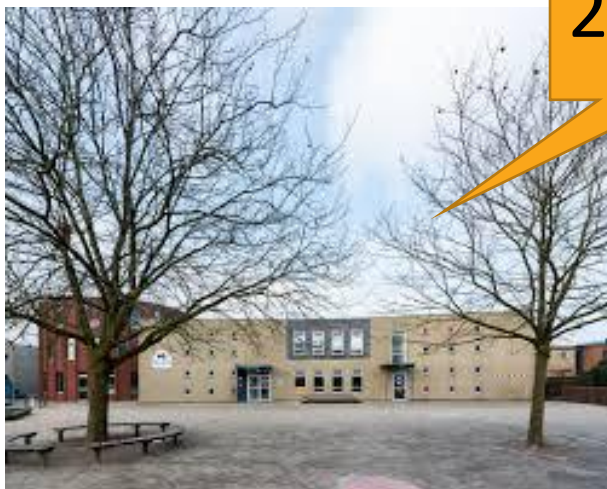
How: pilot 'challenging educational setting'

- Small step, results to celebrate
- Professional learning by doing!



Coaching of School Wide PBS

Exploring phase: shared values



2012



OBS De Meander
sterk in circuitonderwijs

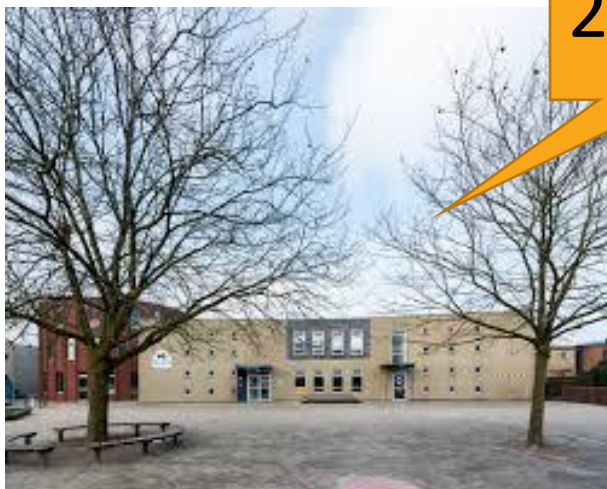


Responsible and safe!



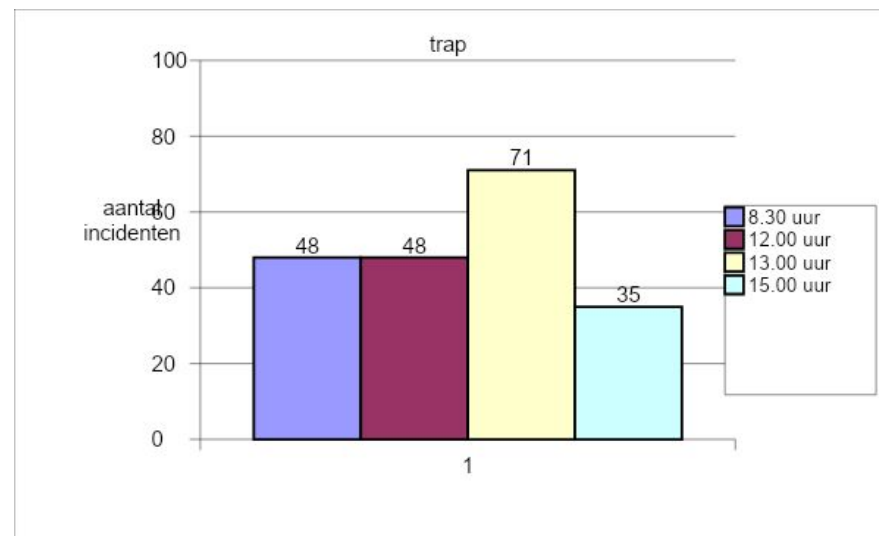
Coaching of School Wide PBS

Exploring/ start: challenging educational setting

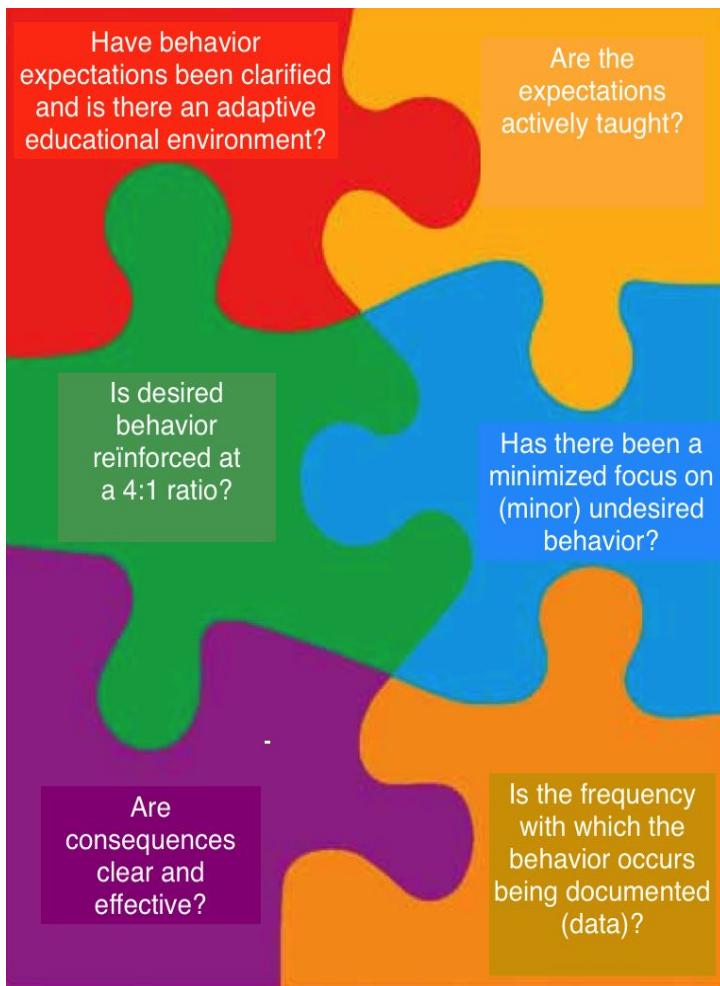


2012

Walking on stairs: baseline data



Tier 1



Model: M Baard

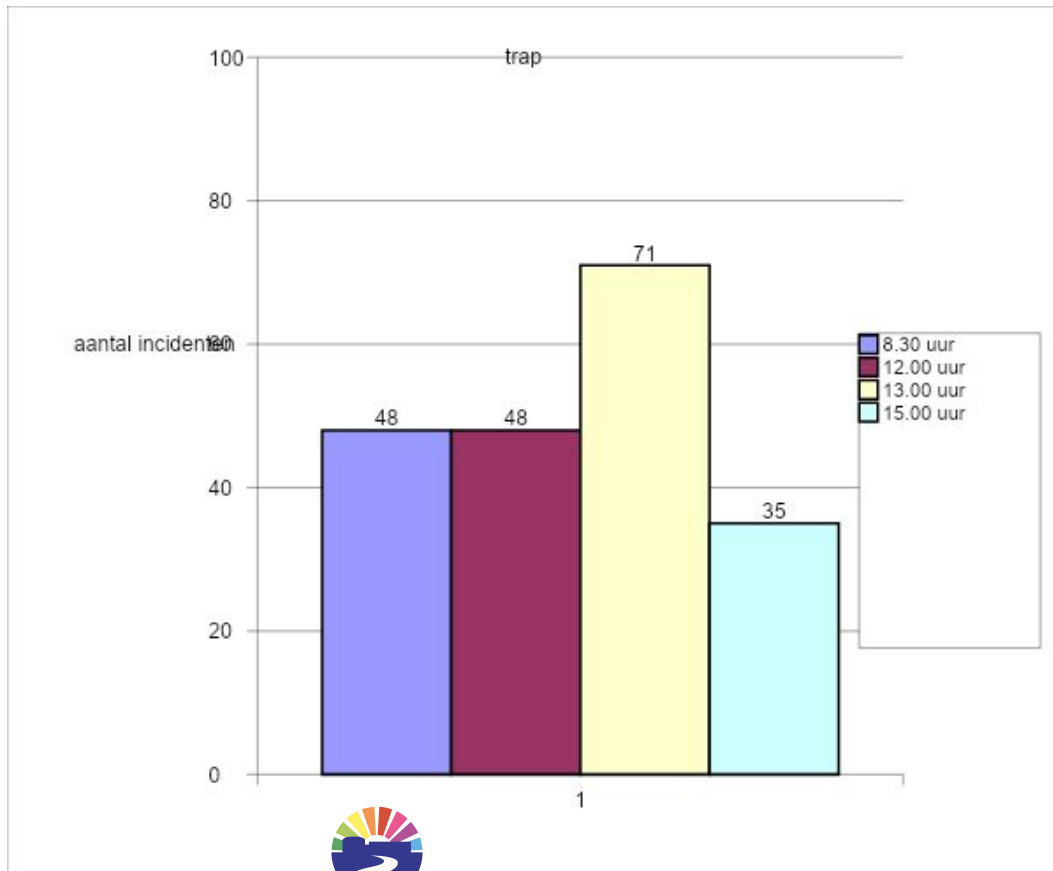


OBS De Meander
sterk in circuitonderwijs

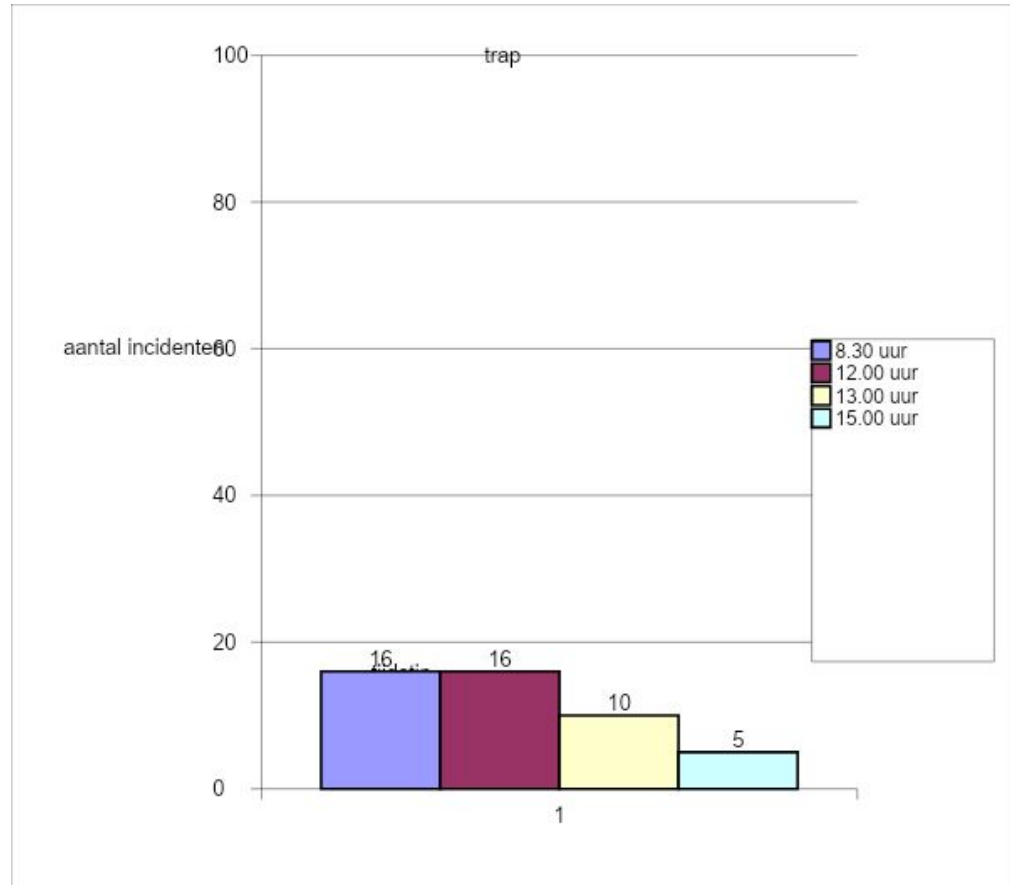


Coaching of School Wide PBS

Change in 4 weeks....



OBS De Meander
sterk in circuitonderwijs

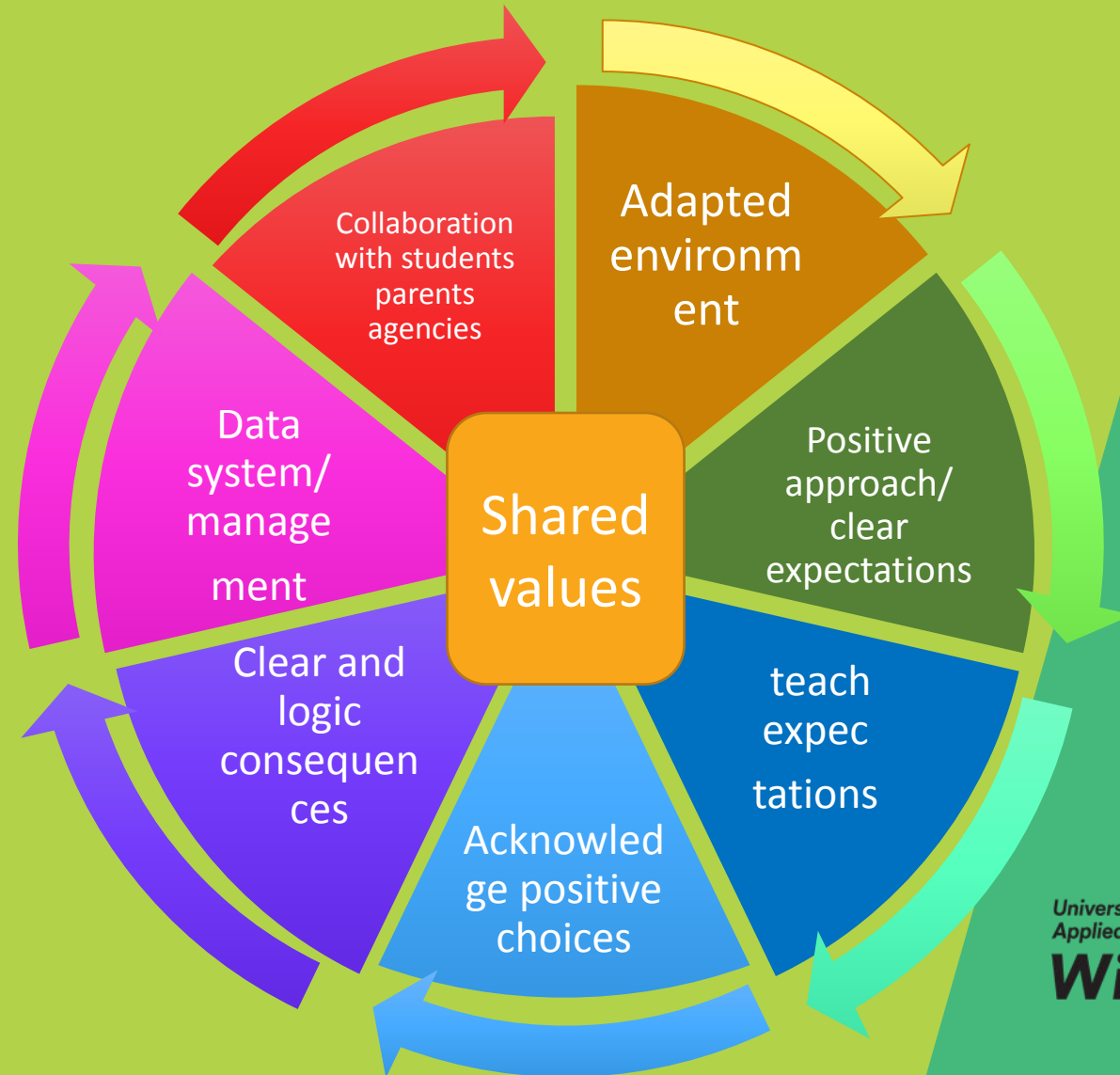


Next steps

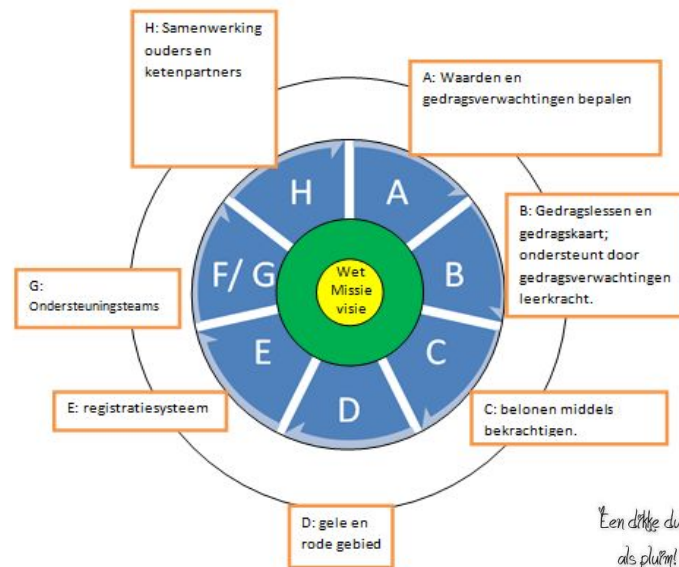
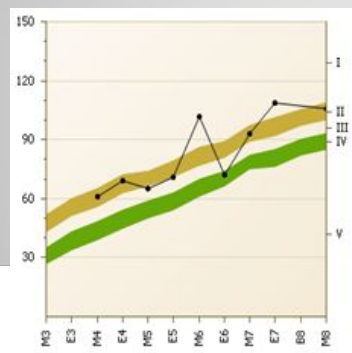
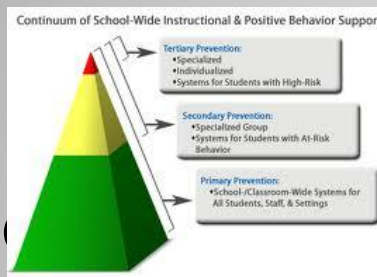
- Start: collect evidence 'this is what we already do' (so we are 'half way'!
- Make the approach systematic (structure)
- Every teacher will have guide lines AND can do it in a way it fits with person and students



SWPBS structure



SWPBS p

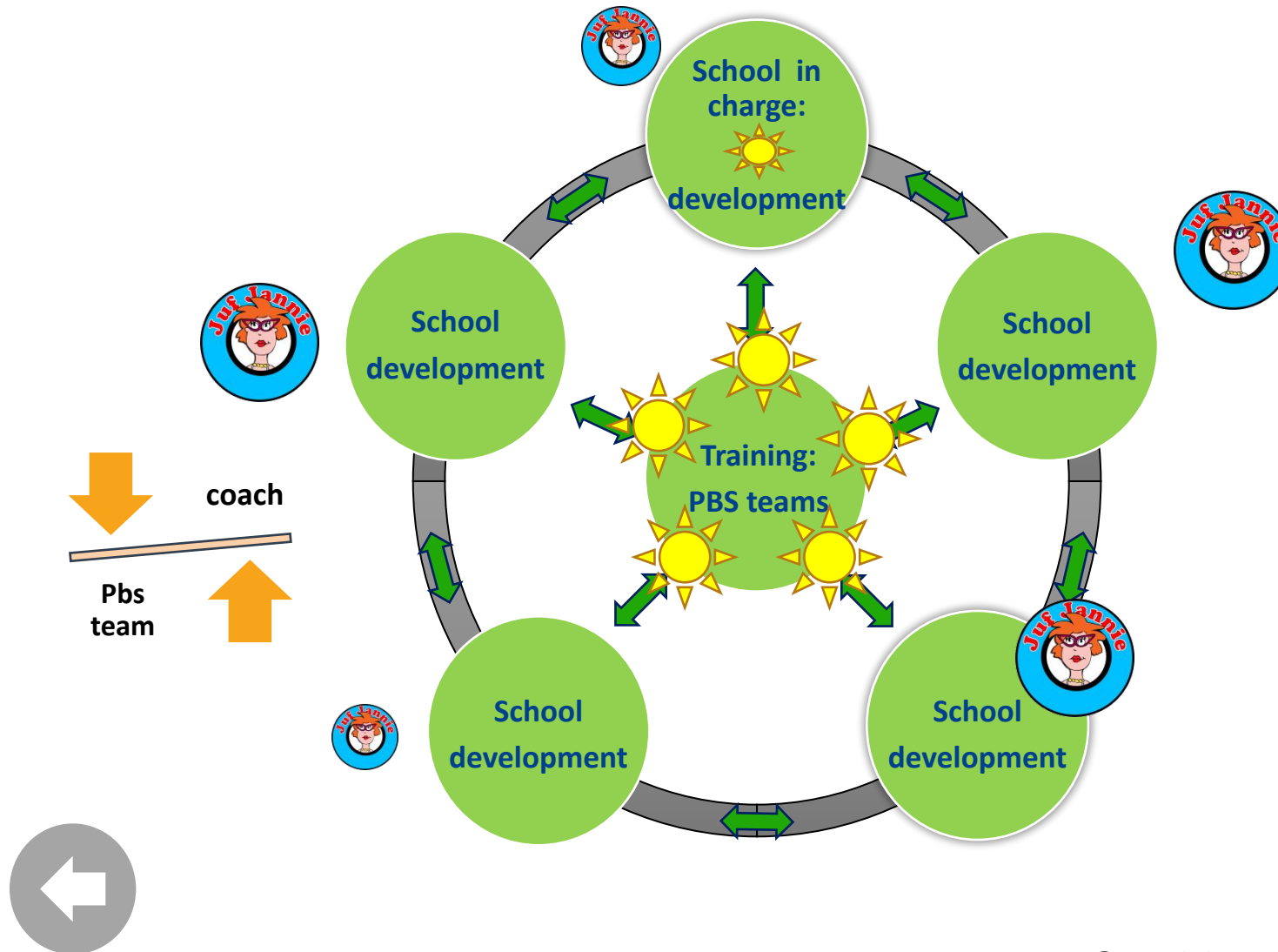




Values
Expectations
Systematic teaching
Reward &
acknowledge
Clear consequences
Data
In every single
classroom

And... leadership:
Teachers & students in
charge!

learning networks: schools exchange and learn collaboratively



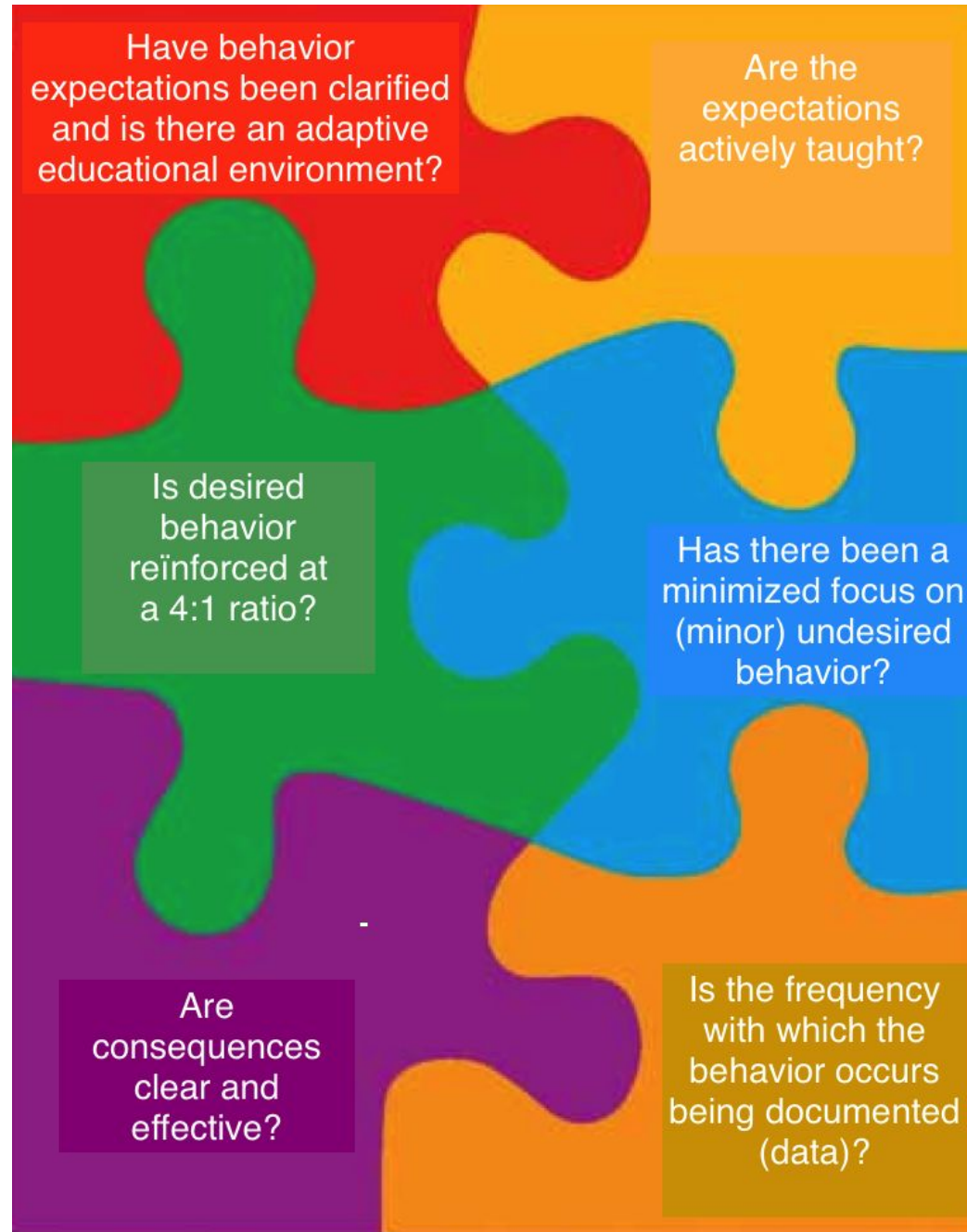
Tier 1

Support for all

**Tomorrow:
Present your
school!**

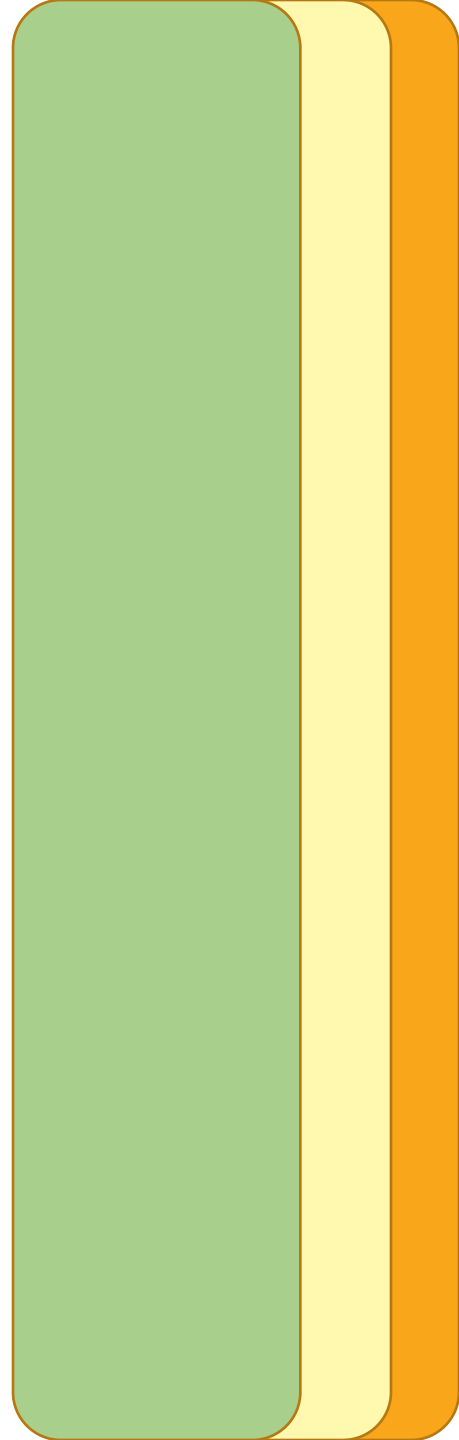
**Framework/
system/ people/
experience/ feel?**

4:1





Prevention



Prevention...

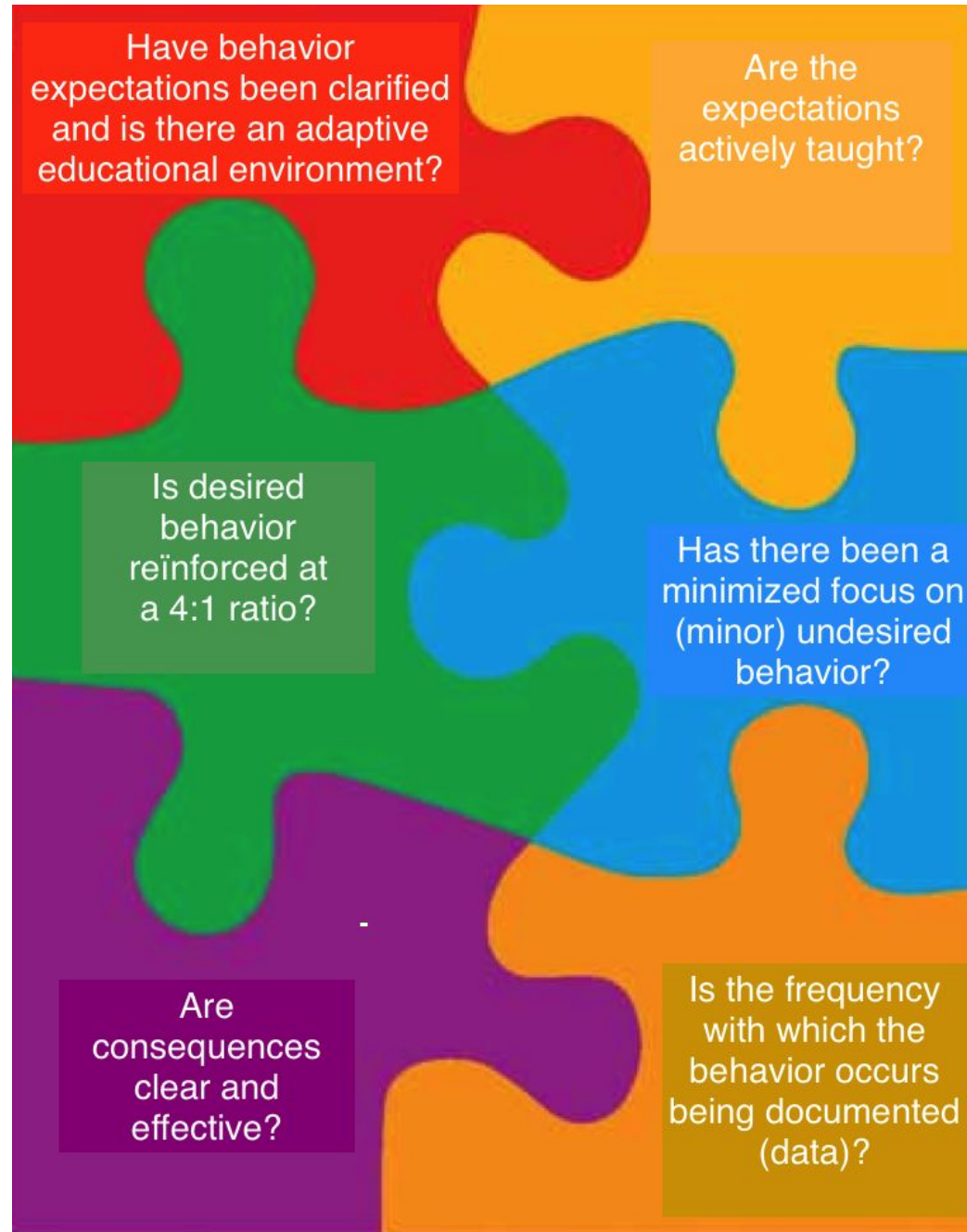


Prevention



Tier 1

Expectations Try out



SW PBS coach program session 2 A - online

Expectations: OMPUA

Observable: you can see it

Measurable: you can measure it

Positively stated

Understandable: student friendly language

Always applicable: can be used every day



Decide Right : visitors in classrooms/ school

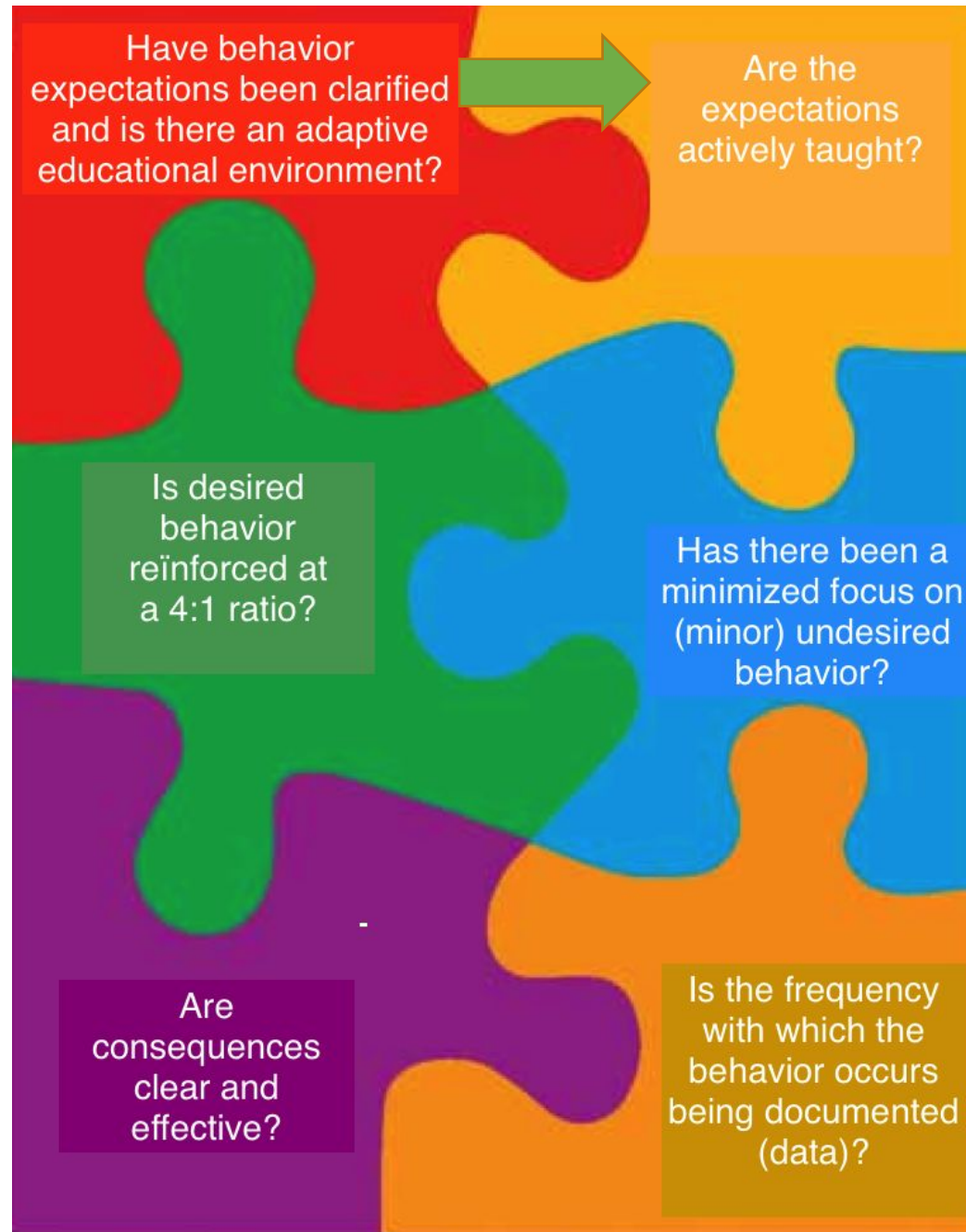
Exercise: values and expectations – 10 min

Values	respect	Justice	Equality	Reliability
Visitors in your school/ classroom	We speak with quiet voice			Verbs proven by behaviour Freedom to act



Tier 1

Teach expectations





Active supervision



W **Valuable friends..**

Safe
Respectfull
Trust
Independent and..
Happy!



University of
Applied Sciences

Windesheim



**Eating together..
How does
respectful looks
like?**



Student actually can teach...



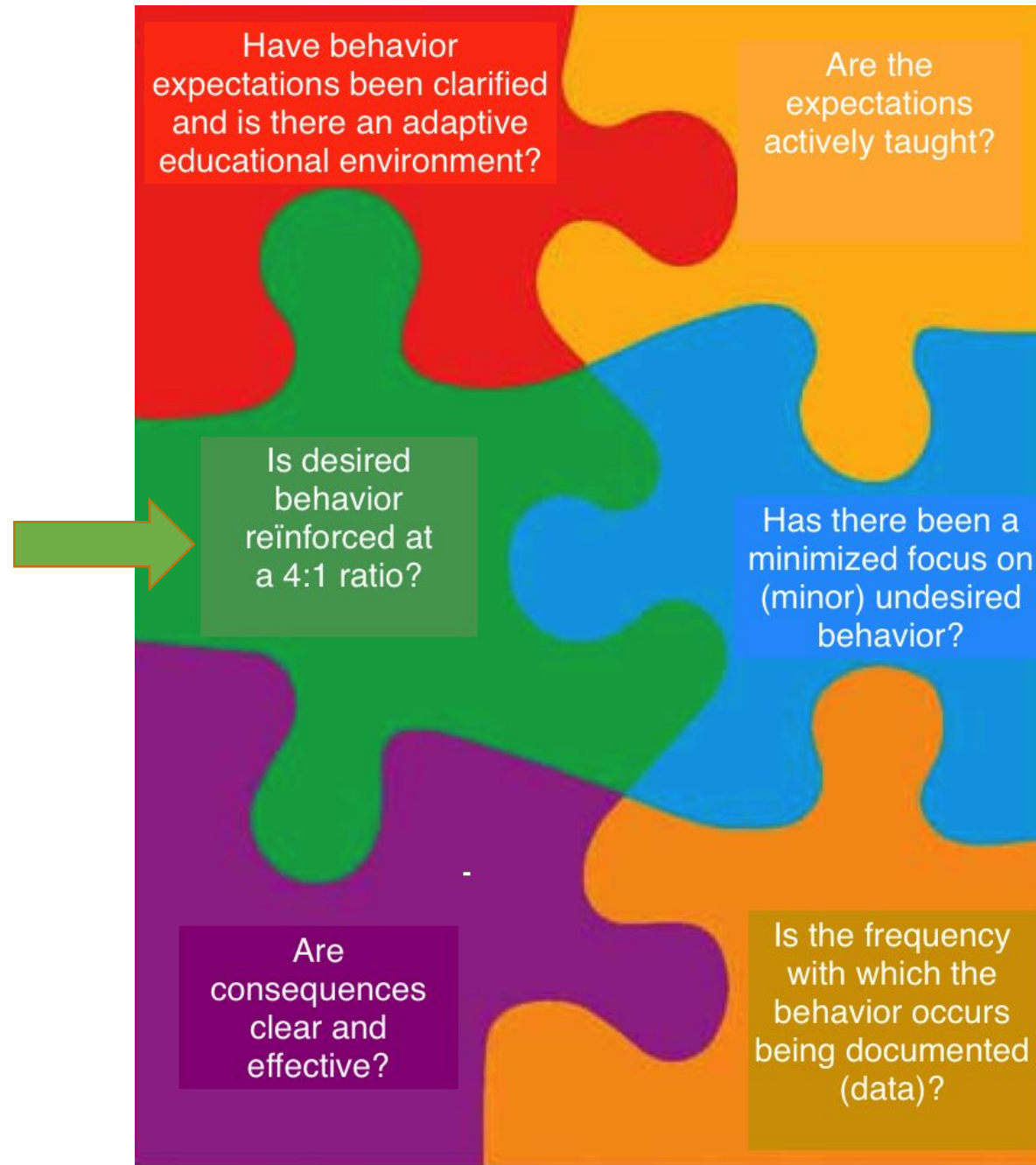
Tier 1

**Reinforcement
Try out**

I saw you

**That's important
because..**

Thank you



Feedback 4:1

- Name:
- saw you..
- That's important because..
- Thank you



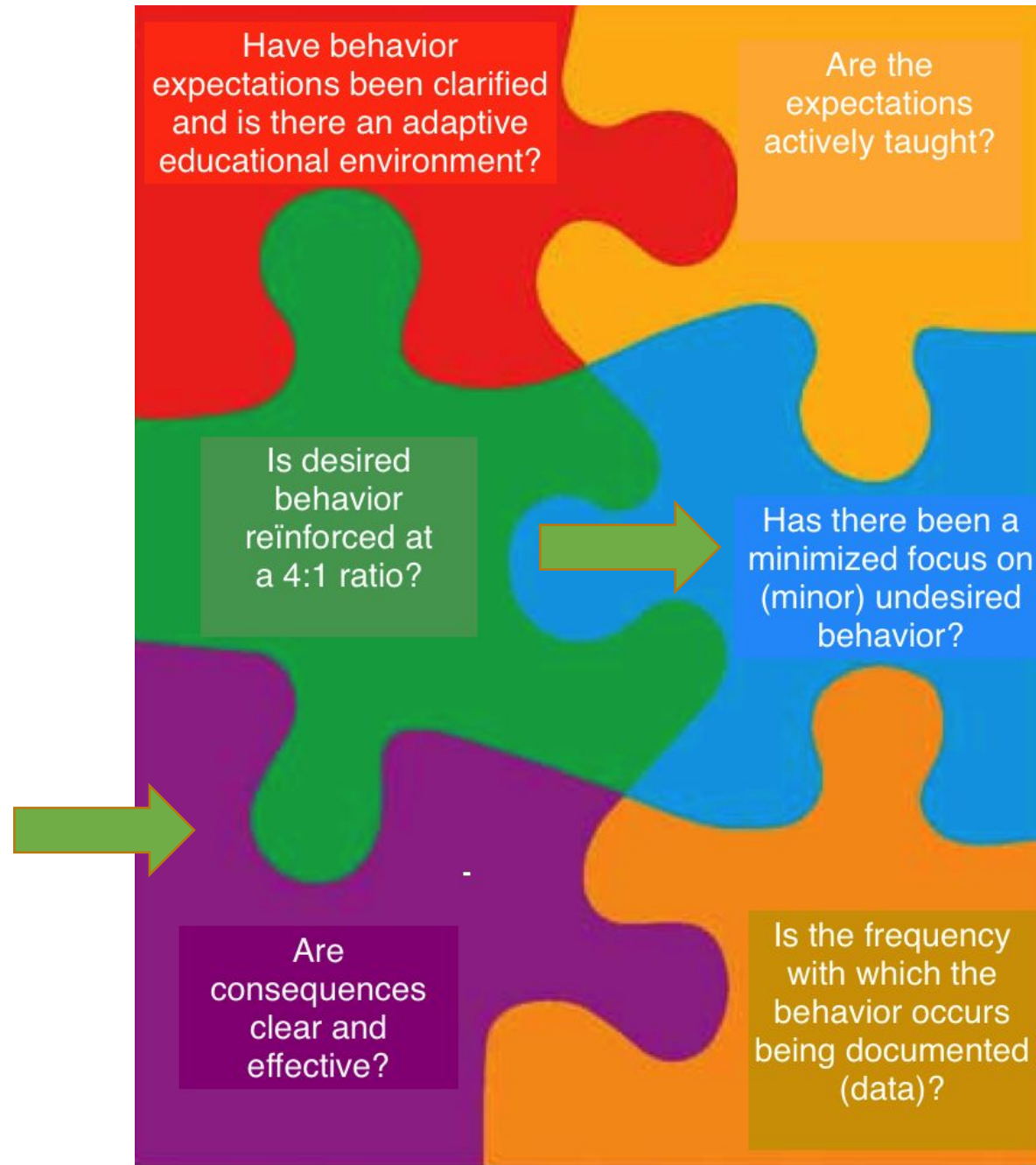
Tier 1

**Reinforcement
Try out**

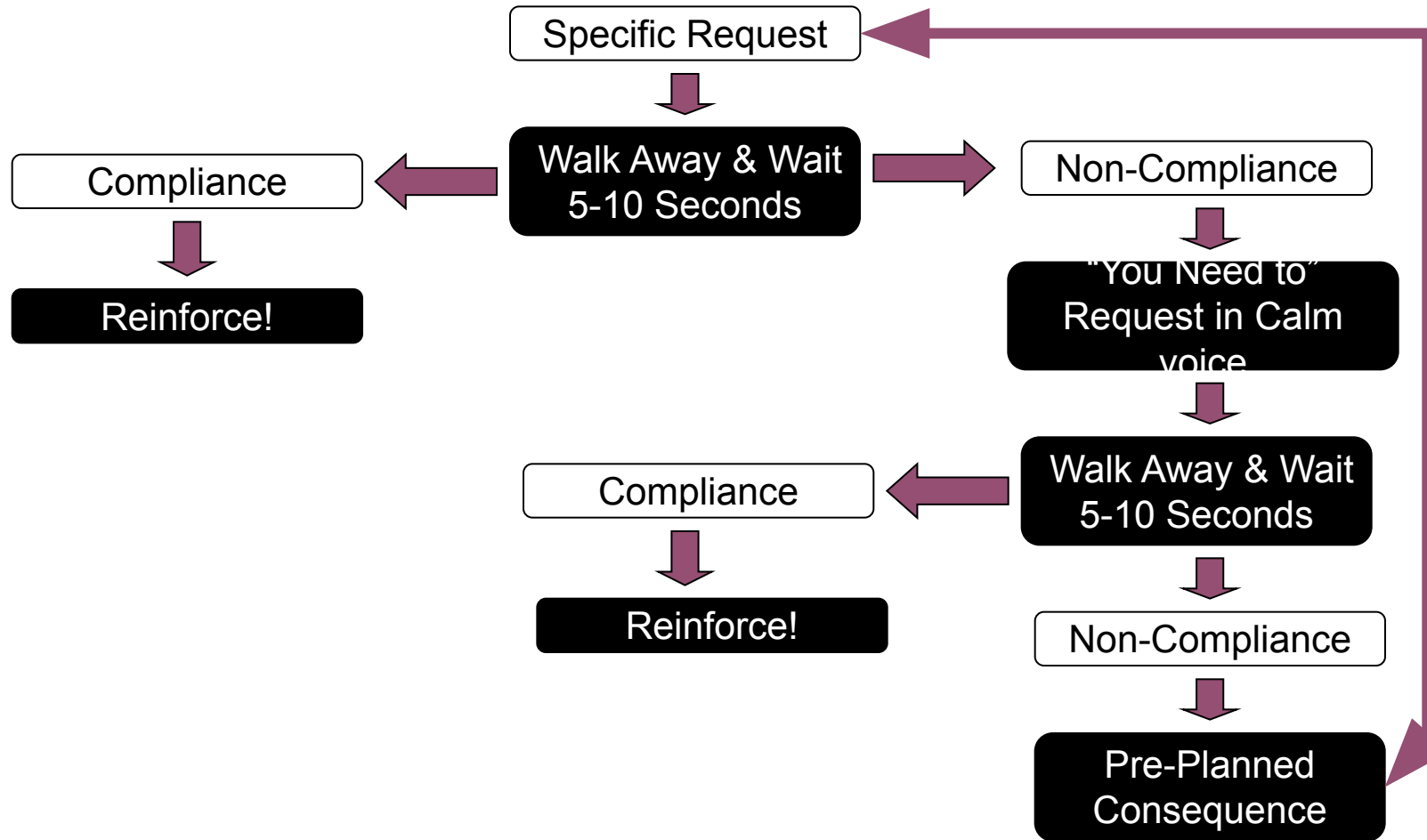
I saw you

**That's important
because..**

Thank you



Specific Request Sequence



Best Practices



Clear consequences



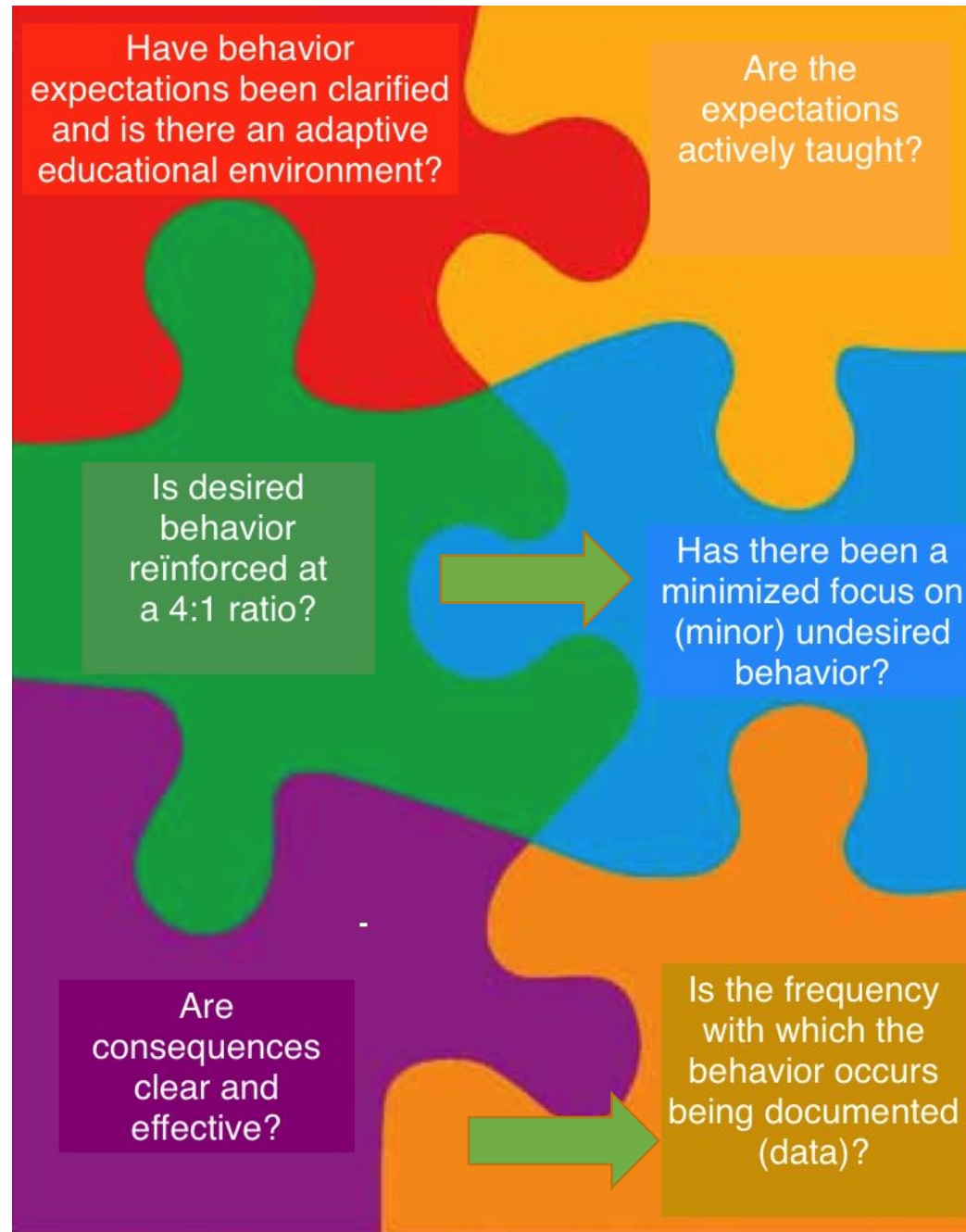
Tier 1

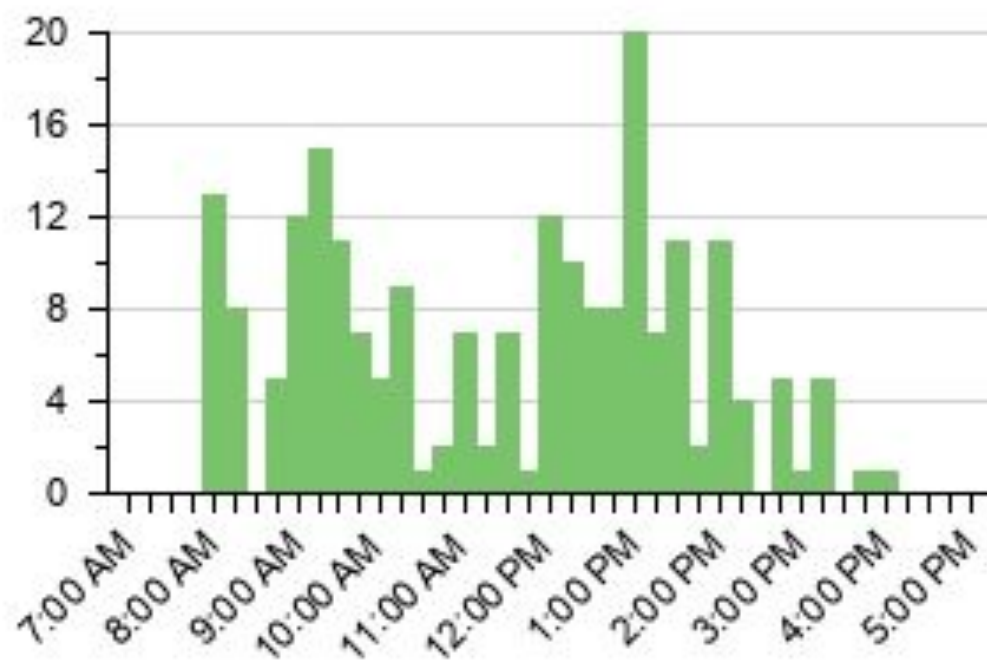
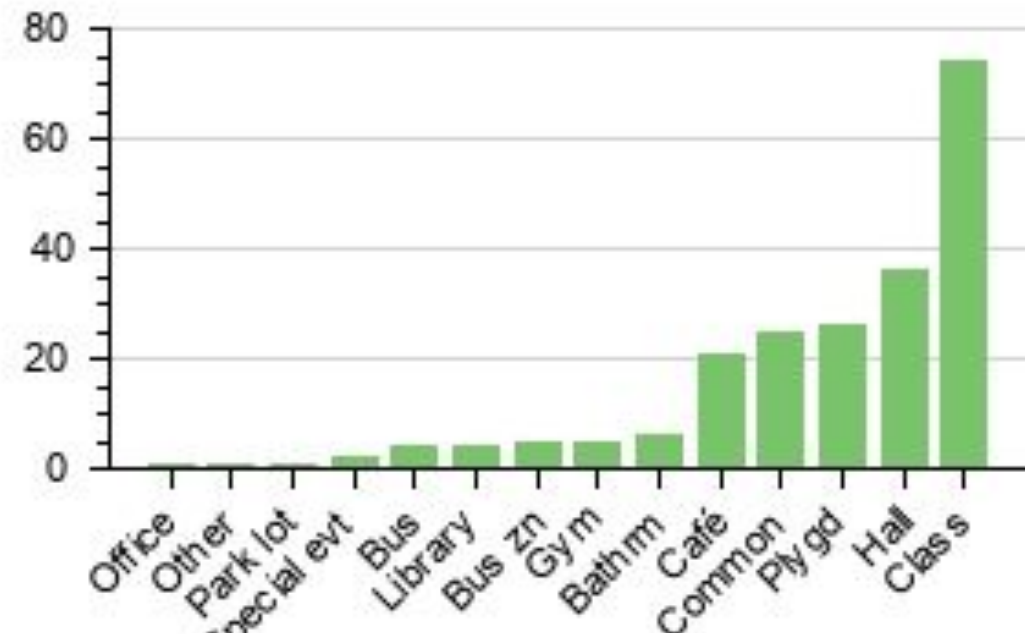
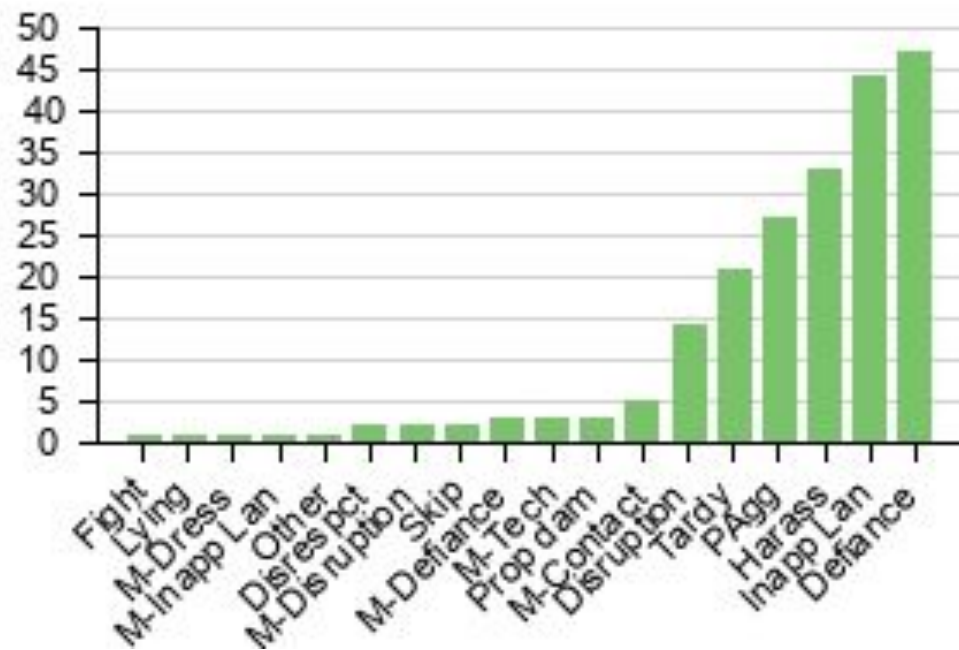
**Reinforcement
Try out**

I saw you

**That's important
because..**

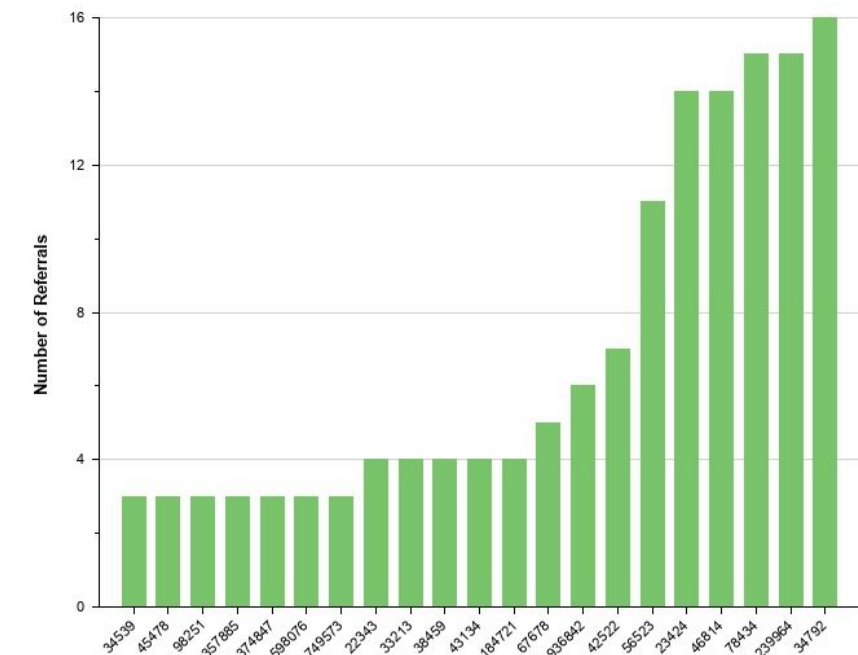
Thank you





Referrals by Student

All, Aug 1, 2020 - Nov 8, 2020, At Least 3 Referrals




Results: first school (2011)

	Meander	Other schools
students	8,7	8,1
parents	8,2	7,7



OBS De Meander
sterk in circuitonderwijs

 Openbare Basisschool Kattenbroek

**Academics:
above
average**

2017	2018	2019
537,8	538	539,2



SRS
Happy Wall



Shared experiences...

'Candy '??!!

Please take one, look, try out, touch, tast and....

write down as much words as you can to explain what is this...



Candy !?!

What if.. We only give you the word and this picture? Which words at your list will disappear??



Candy!!?! !!?!

What if.. We only give you the word 'Candy'. Which words will disappear from your list??



Respect !?! !!?!

What if.. We only give you the word 'Respect'. It's written every where and it is 'just a word'? What will I understand?? This is why values need to be daily 'verbs': you can **hear, feel, touch, try out, jump, do, show it and get an understanding**: why it is important, how it looks like and what you can do to contribute to the school we realize on a daily basis!



Enjoy the school visits!

Joke Kamstra

j.kamstra@windesheim.nl

Joke Kamstra

j.Kamstra@windesheim.nl

