



Regarding: **DECIDE RIGHT: programme of visit to the Netherlands**

Date: April 4 – 5 – 6 2022

Monday April 4th

Time	Subject/Activity	Who	Where & What
9.30 – 10.00	Welcome with coffee & tea	Sui Lin & Monique	F2.40
10.00 – 12.00	Overview of SWPBIS <ul style="list-style-type: none"> - Behavioral expectations - 5 pillars - Multi tiered support - Tier 1 interventions - Challenging educational situations - Research 	Sui Lin & Monique	Interactive Q&A
12.00 – 13.00	Lunch in Windesheim cafeteria		
13.00 -17.00	Several subjects: <ul style="list-style-type: none"> - Cultural adaptation of SWPBIS - Fidelity of implementation - Phases of implementation - Data driven decision making: behavior incidents + other data + action planning 	Sui Lin & Monique	Interactive Q&A
18.00 – 22.00	Consortium dinner in Zwolle		

Tuesday April 5th

Time	Subject/Activity	Who	Where & What
9.00 – 9.30	Welcome with coffee & tea	Sui Lin & Joke	F1.15
9.30 – 12.00	Preparing school visits <ul style="list-style-type: none"> - Behavioral expectations - How to travel? - Presentations on Wednesday 	Sui Lin & Joke & Lara & Martijn	
12.00 – 17.00	Travelling independently to schools, accompanied by Windesheim staff	Sui Lin & Joke & Lara & Martijn	In small groups of

	School visit		3-4 persons
--	--------------	--	----------------

Wednesday April 6th

Time	Subject/Activity	Who	Where & What
9.00 – 9.30	Welcome with coffee & tea	Sui Lin & Monique	F2.40
9.30 – 12.00	Group presentations of school visits Exchanging information	Sui Lin & Monique	Presentations Q&A
12.00 – 13.00	Lunch in Windesheim cafeteria		
13.00 -15.00	Discussion what can be used in Turkey & Finland	Sui Lin & Monique	Interactive Q&A
15.00	Wrapping up	Sui Lin & Monique	



I SAW YOU..

**THAT'S VALUABLE
BECAUSE...**

THANK YOU !



I SAW YOU...

**THAT 'S VALUABLE
BECAUSE...**

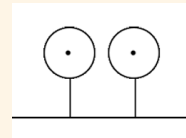
THANK YOU !



I saw you...

*That's valuable
Because ...*

Thank you !



I saw you...

*That's valuable
Because...*

Thank you !

Activity: School visit
 Date: April 5th 2022 (PM)
 Guide: Joke Kamstra (j.kamstra@windesheim.nl; +31 620 55 09 67)
 School: Ambelt Primary School; Special Education

Travel details: 11.55: walk to the trainstation; 12.11 bus 70 (Steenwijk) platform AO; arrival 12.26; pleasant walk to the school. Time of arrival: 12.54. Joke Kamstra will guide the group. You all need tickets for public transport.

Program:
 13.00 – 13.30 Conversation with Hendrik Jan Roozenveld (principal) and Betty Mulder
 13.30 – 13.45 Classroom: visit group HC (age 6-7) PBS lesson – arranged especially for visitors to show how this is delivered in practice.
 13.45 – 14.30 Tour around the school: other buildings and school area.
 14.30- 15.30 Reflection/ presentation (Joke)

	<p>Ambelt, school (6 locations) for Special Education in Zwolle. Ambelt Primary started in 2011 with the implementation of SW PBS. Students at some of the schools perceived their school as an ‘unsafe place’. Ambelt wanted to change for the better. Nowadays this school implemented SW PBS with fidelity; data shows this school is perceived as safe and positive by students, staf and parents.</p>	<p>PBS coordinator:</p>  <p>Betty Mulder b.mulder@ambelt.nl</p>
<p>Movie: Speciaal onderwijs Zwolle - Ambelt</p> <p>Movie made by a student: Joris successes - YouTube</p>		<p>Adress: Herfterlaan 39, 8026 RC Zwolle</p> <p>Website: Speciaal onderwijs Zwolle - Ambelt</p>

Visitors:	email	telephone
1. Çiğil Aykut		
2. İrem Akçayır		
3. Şenol Demirtaş		
4. Necdet Karasu		
5. Ebubekir Aydın		
6. Sadife Çinkır		





Schoolwide Positive Behaviour Support

Activity: School visit
 Date: April 5th 2022 (PM)
 Guide: Lara Engelsman (L.engelsman@windesheim.nl), tel 06 41413764
 School: OEC 't Ravelijn, Special Education

Travel details: 11.55: walk to trainstation Zwolle; 12.26 train (Leeuwarden) platform 1b; Steenwijk; time of arrival: 12.51; 5 min walk to the school (next to the station). Lara Engelsman will guide the group. You all need tickets for public transport.

Program:

14.00 - 14.15 meet & greet: Sandra(PBS coordinator) and Conny Kok (principal)
 14.15 – 14.45 Introduction of the school, information about SW PBS, movie PBS
 14.45 – 15.15 walk through the school (PBS: prevention/ schoolwide/ classrooms)
 15.15 – 15.45 Meeting with PBS leadership team of this school.
 15.45-16.00 Feedback & reflection.

<p>Principal: Connie Kok</p> <p>PBS coordinator:</p> <p>Sandra de Jong</p> <p>s.dejong@oecravelijn.nl</p> 	<p>OEC t Ravelijn – school for Special Education – is certified as a PBS school. PBS is implemented with fidelity at all level s (Tier 1/2/3).</p> <div style="text-align: center;">  </div> <p>In 2014 two seperate schools for Special Education shared the same building. Both schools used PBS to create a positive and safe school climate. The schools merged in 2017. PBS was and is a solid base to support teamwork as is shown on a daily basis.</p>	
<p>Video: Onze school (oecravelijn.nl)</p> <p>Adress: De Vesting 15, 8332 GL Steenwijk</p> <p>Website: 't Ravelijn - Basisschool in Steenwijk (oecravelijn.nl)</p>		

Visitors:	email	telephone
1. Esma Arslan		
2. Uğur Ersoy		
3. Meryem Şahin		
4. Asuman Erdem		
5. Anniina Kämäräinen		



6. Eija Kärnä

Schoolwide Positive Behaviour Support

Activity: School visit
Date: April 5th 2022 (PM)
Guide: Sui Lin Goei
School: CBS t Lichtschip, Ens

Travel details: Walk to trainstation Zwolle; 12.47 train to Kampen; arrival time 12.58; 2 min. walk; bus 141 (Urk) Platform D, 13.03 to Ens, time of arrival:13.14; walk to the school (8 min), time of arrival 13.22.

Program:
14.00 hrs Welcome, children sing their SWPBS school song
14.10 hrs Meeting with SWPBS coordinator and kids team
14.30 hrs School tour
15.00 hrs Meeting with school team
15.30 hrs Meeting with SWPBS leadership team
16.00 hrs End of visit and travelling back to Zwolle

Principal: Pietronella van Dijk PBS coordinator: Gerrie den Toom	't Lichtschip is one of three primary schools in the village of Ens. It is a small protestant school with room for every child. The school values are: Respect, Engagement, Fun.	
Video: PBS op Het Lichtschip - YouTube Adress: Sportweg 24; 8307 AN Ens Website: https://www.hetlichtschip.nl/		

Visitors:	email	telephone
1. Selda Aras		
2. Arif Yilmaz		
3. Esra Tuğba Çoban Söylemez		
4. Sevil Meran		
5. Selda Ata Doğan		
6		

